

CLEANROOM EQUIPMENT

SUITE® FRAMES AND NYLON REMOVABLE STRIPS



PRODUCT INFORMATION

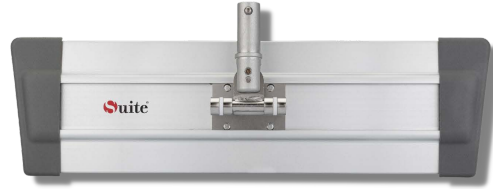
Part Number: Y-10516-AANK-2

Name: Suite® TL Primary Duty Frame

Materials: Autoclavable anodized aluminum and plastic

Color: Gray

Dimensions: 16" x 4.5"



Part Number: Y-10516-50

Name: Suite® TL PD Replacement Strips

Materials: Polypropylene and Nylon

Color: Black

Dimensions: 14.75" x 0.87"



Part Number: Y-10516-50IR

Name: Gamma Irradiated Suite® TL PD Replacement Strips

Materials: Polypropylene and Nylon

Color: Black

Dimensions: 14.75" x 0.87"

PRODUCT INFORMATION

Part Number: Y-10510-ANNK

Name: Suite® Remote Duty Frame

Materials: Autoclavable anodized aluminum and plastic

Color: Gray

Dimensions: 10" x 4.5"



Part Number: Y-10510-50

Name: Suite® Remote Duty Replacement Strips

Materials: Polypropylene and Nylon

Color: Black

Dimensions: 8.75" x 0.87"



Part Number: Y-10510-50IR

Name: Gamma Irradiated Suite® Remote Duty Replacement Strips

Materials: Polypropylene and Nylon

Color: Black

Dimensions: 8.75" x 0.87"

BP-STE-0008-A

